

**ntgrate<sup>®</sup>**

premium woven vinyl flooring

# Let's ntgrate.

**ntgrate® collection**  
Meet our family.

**06**

**History.**  
Know-how and craftsmanship since 1958.

**08**

**Quality is what you get.**  
Get to know the DNA of ntgrate®.

**010**

**From inspiration to creation.**  
Where makers meet creators.

**012**

**We ntgrate®.**  
Office. hospitality. Retail. Home.

**014**

**Shapes.**  
Versatile. Let's play!

**020**

**What kind of person are you?**  
Sharp 26. Fair 32. Bold 42.

**024**

**Whisper.**  
Innovation has never  
sounded so silent.

**048**

**Klic.**  
The extremely durable plank floor.

**050**

**Carpet.**  
Inside out. Outdoor living.

**052**

**Acoustic wall covering-Wall paper**  
Floor your wall.

**054**

**At your service.**  
ntgrate® for you.

**058**

**Ecology.**  
ntgrate® is green.

**060**

**Technical specifications.**

**062**





---

hello

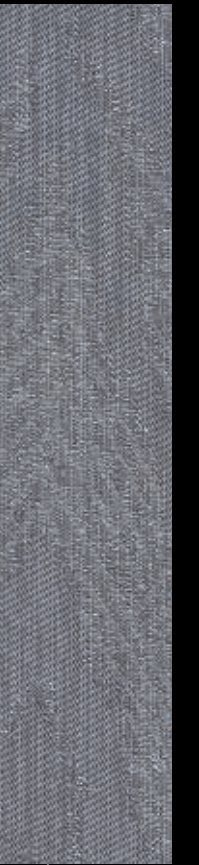
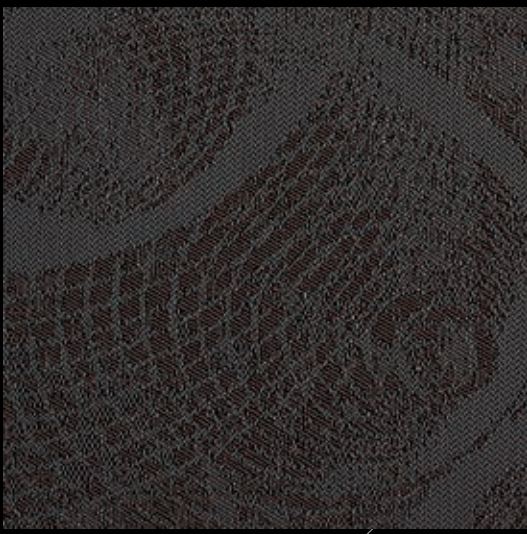
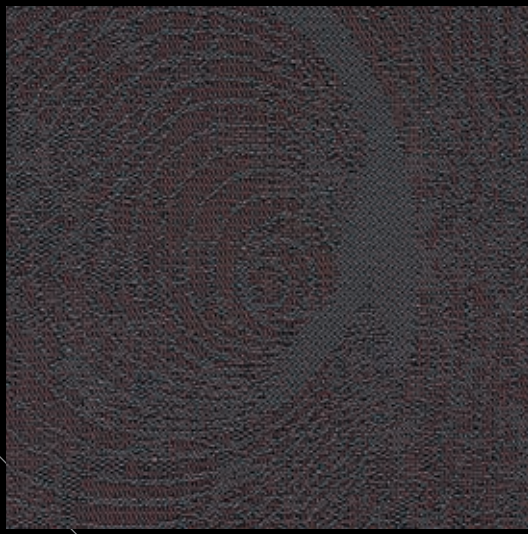
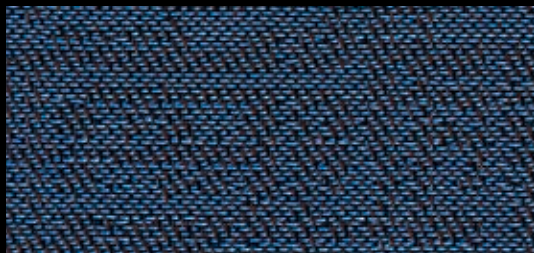
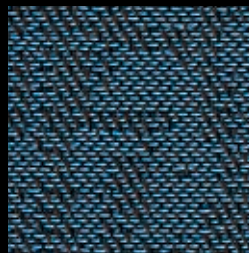
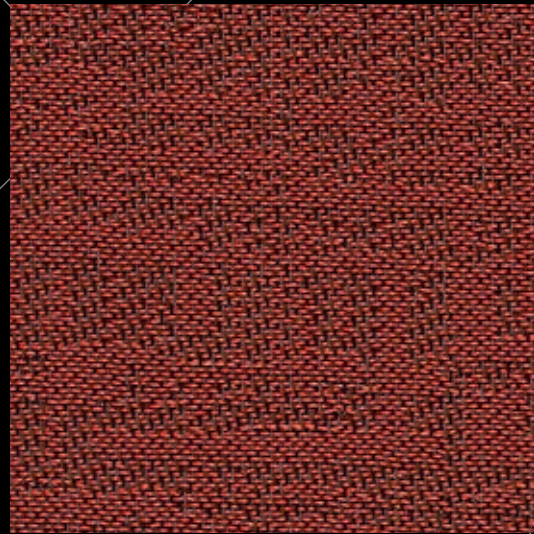
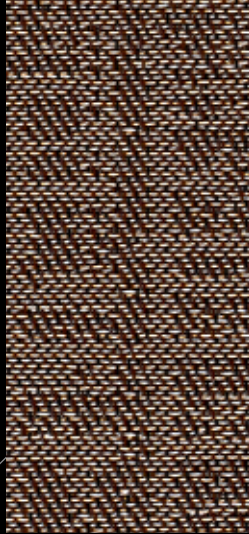
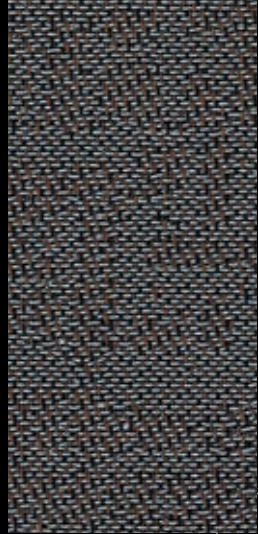
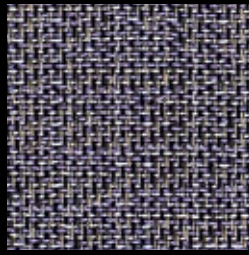
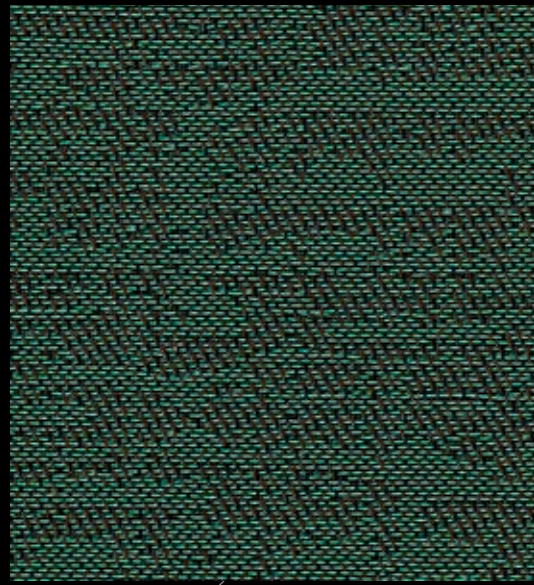
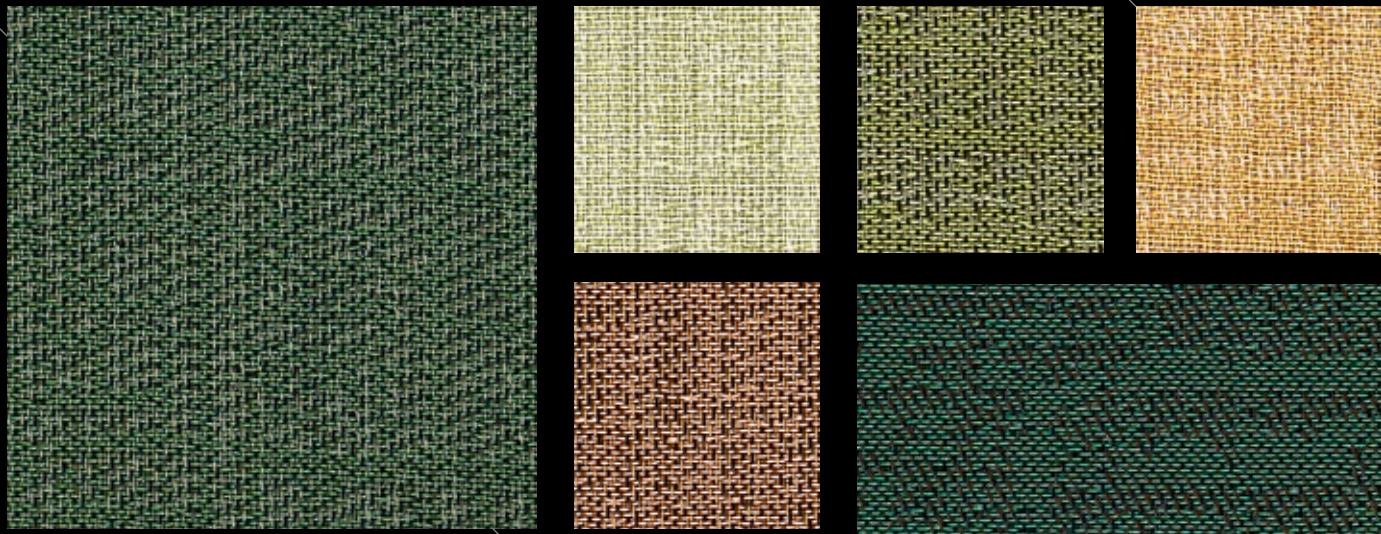
---

# my name is Suri

A bouquet of red roses flares in my Persian name. Fiery. Warm. And loving. Come home and bask in my flame.

Versatile - Bean / Fair Raven / Fair Suri





**bold.**

**sharp.**

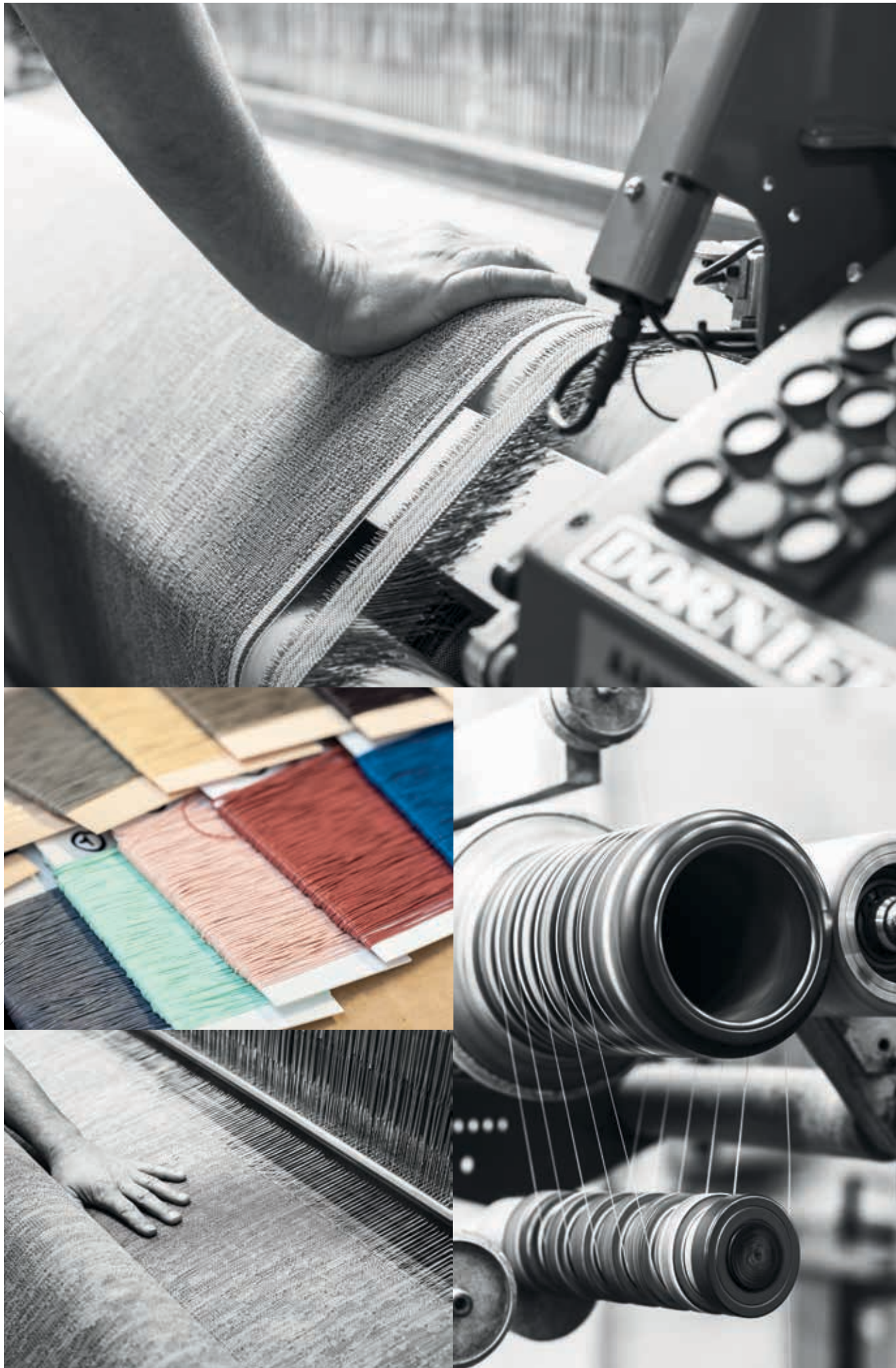
**fair.**

# Meet the ntgrate® family.

Myrthe. Sienna. Camille. Albert. Stan.  
Each line was given a resounding name. From vintage chic to tight and tough. If you follow the unique life paths of the woven threads, you will meet a different soul every time. And that's what makes the ntgrate® family so special.

**Dare to combine.** Hazel with Coralie. Esmée with Suri. Henri with Aurore. They will make you see your interior project differently every time. The only creative limit is where you draw the line. Aim for recklessly wild or royally sober. **You choose. You live. You create.**





# The future is innovating your past.

— *know-how and craftsmanship since 1958*

Do you choose the personal character of ntgrate®? Then you choose yesterday's craftsmanship and the dynamics of tomorrow. This new generation of flooring combines the art of weaving with today's most innovative techniques. Craftsmanship meets high-tech.

**The past.** The ntgrate® family originates from Copaco Screenweavers, who were founded in 1958 and established themselves as the European leaders in fiberglass fabrics. Just like their ancestors, the second generation is also fully committed to innovation. In the world of interior design and high performance flooring, ntgrate® woven vinyl is state-of-the-art.

**The future.** Combining over 60 years of know-how with clever vertical integration, every floor tile is a high-quality masterpiece. The family expands, from 'fair Esmée', 'bold Stan' to 'sharp Bruno'. Every line is given its own personality. Find the style that fits you and shape your life. Today and tomorrow.

**Belgian quality. World class.**





Fair Suri

# Quality is what you get.

— *force is what you feel*

Have a look at your own family. Behind every name lies a different character. It's no different here. Camille isn't Leila. And still. You'll find that every line carries the same DNA at its core: eye-catching design, indestructible, maintenance-friendly, endless possibilities.

**Eye-catching design.** Look at your floor in the light of morning and again at dusk. Notice the difference? Like a painter works his canvas using light, so does your floor's design. The incidence of light and laying direction determine the atmosphere of your interior project.

**Indestructible.** Don't let the design's elegant looks fool you. The ntgrate® top layer and fiberglass core are extremely tough and sturdy. The high-tech Topgrate® weave sets a new standard in floor quality: it's dimensionally stable, extremely wear-resistant and has great colour uniformity. Approved for intensive, high commercial use. Feel like organizing a marathon in your new interior? Get set. Go!

**Maintenance-friendly.** You're not one to sit still. You're the hop-skip-jump-oops!-let's-get-this-party-started type. Your floor pulses to your rhythm. Cleaning's clearly not your thing, living is. ntgrate® repels dirt easily, always leaving it looking fresh and new. Day after day. Night after night.

**Endless possibilities.** Go bold and mix it all up in your hotel lobby. Keep it sober in your office space. Unique designs and trendy characters let you combine to your heart's content: from rough and rugged to wonderfully subdued. Who would you like to be?





Sharp Bruno

# From inspiration to creation.

— *where makers meet creators*

You push the boundaries with ntgrate®. The foundation is our limitless search for **inspiring trends**. Looking for an innovative floor? Then think out of the box, and cross some lines.

Our designers and technicians hit the town with trend watchers, fashion designers and colour experts. Well, they hit the world, actually, scooping up ideas everywhere: from retro photography in Berlin to modern art in New York. The result? An extensive collection of floorings sporting **distinctive shapes, colours and characters**.

**Shapes.** Ntgrate® is available as tiles (50x50cm), rolls (2m) and 'klic' planks. If you are looking for **the flooring that suits you best**, you'll find a solution here. Looking for additional impact? Why not go wild with some exciting patterns?

**Colours.** Misty grey. Emerald green. Deep red. Anthracite. Slick and tight. Our designers travelled abroad, shapeshifted into colour catchers. An even beige or a wild patchwork? Anything is possible.

**Characters.** Each line has its own unique face. Internal and external craftsmen have designed patterns based on dozens of names and personalities. Did your name make the list? Surely, that's not a coincidence.



Sharp Selda



office.

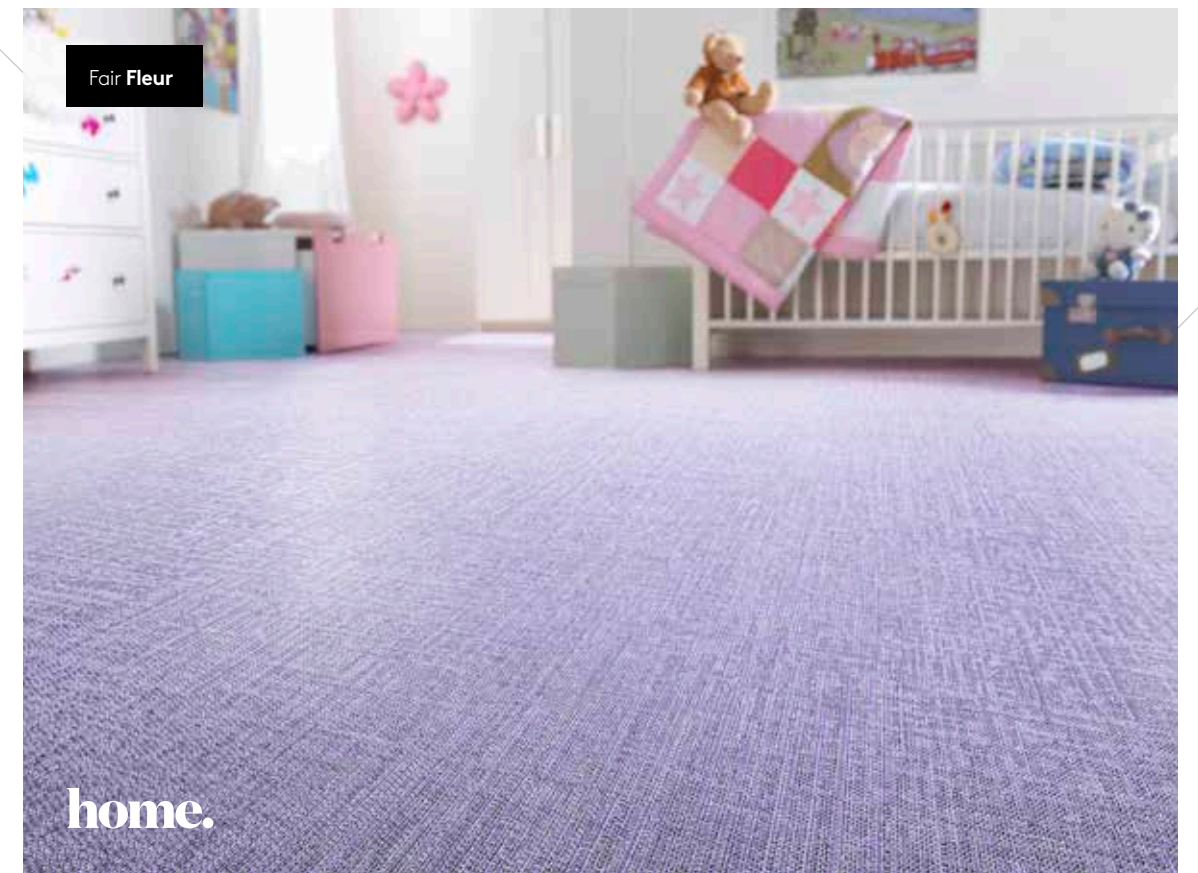
# we ntgrate.

— *the right person, in the right place*

Who are the people that like to drop by your place? Pass through your door? Walk on your floor? Truth be told, we are used to a motley crew at ntgrate®. Creative souls - interior designers, architects, artists - as well as the more practically inclined. And we have **flooring to match each and every personality**. From vintage chic to boisterously hip. There's one thing they all have in common, though: they all set the bar pretty, pretty high. Floors should be sturdy and resilient. In an **office**, people bubble and bounce around all the time. In **hotels and retail**: hustle and bustle! And at **home**? Ah, those twin domains of peace and pandemonium!

Ntgrate® has been certified for **class 33**. Having a rough day? May the floors be with you. Strictly Belgian, as well. Surrealistically surfing between bonkers and brilliant. Make your play with tiles, click or strips. Explore your own limits. Or flirt with new frontiers: with Suri, from the mysterious East, or Albert, the quintessential Brit. We dare you.

Fair Fleur



home.





---

hello

---

# my name is Mauro

I like the dusk. Come find me between day and  
night, when evening lights fade into  
matt blackness.



Versatile Hex | Fair **Fleur**  
Versatile Flowerz | Fair **Viola** - Fair **Antoinette**





Versatile Frame | Fair Hazel - Fair Inez - Fair Sienna



# Versatile.

— *new shapes.*  
*let's play!*

The ntgrate® family doesn't cut corners. Not in the literal sense, anyway. You already know the square tiles, planks and rolls.

**“You see squares and rectangles everywhere. Everybody hides the seams. I intentionally go against the grain: the lines should come alive. Bring out the true nature of your floor!”**

- Gerd Couckhuyt, ntgrate 'Versatile' designer

To add extra character to your floor, top designer Gerd Couckhuyt created five new shapes, ranging from the bold Bean to the futuristic Flowerz. Play with the shapes and laying direction until the puzzle fits.

**Versatile. Be a rebel!**



**Star**  
↔ 538 mm  
⌈ 538 mm



**Hex**  
↔ 577 mm  
⌈ 500 mm

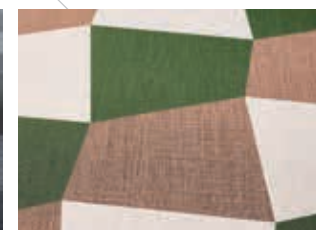


**Flowerz**  
↔ 749 mm  
⌈ 865 mm



**Bean ST**  
↔ 440 mm  
⌈ 649 mm

**Bean LG**  
↔ 649 mm  
⌈ 440 mm



**Frame ST**  
↔ 477 mm  
⌈ 570 mm

**Frame LG**  
↔ 570 mm  
⌈ 477 mm



**Plank ST**  
↔ 250 mm  
⌈ 1000 mm

**Plank LG**  
↔ 1000 mm  
⌈ 250 mm



Versatile Hex | Fair Myrthe  
Versatile Flowerz | Fair Chloé - Fair Esmée - Fair Hazel





**What kind  
of person  
are you?**



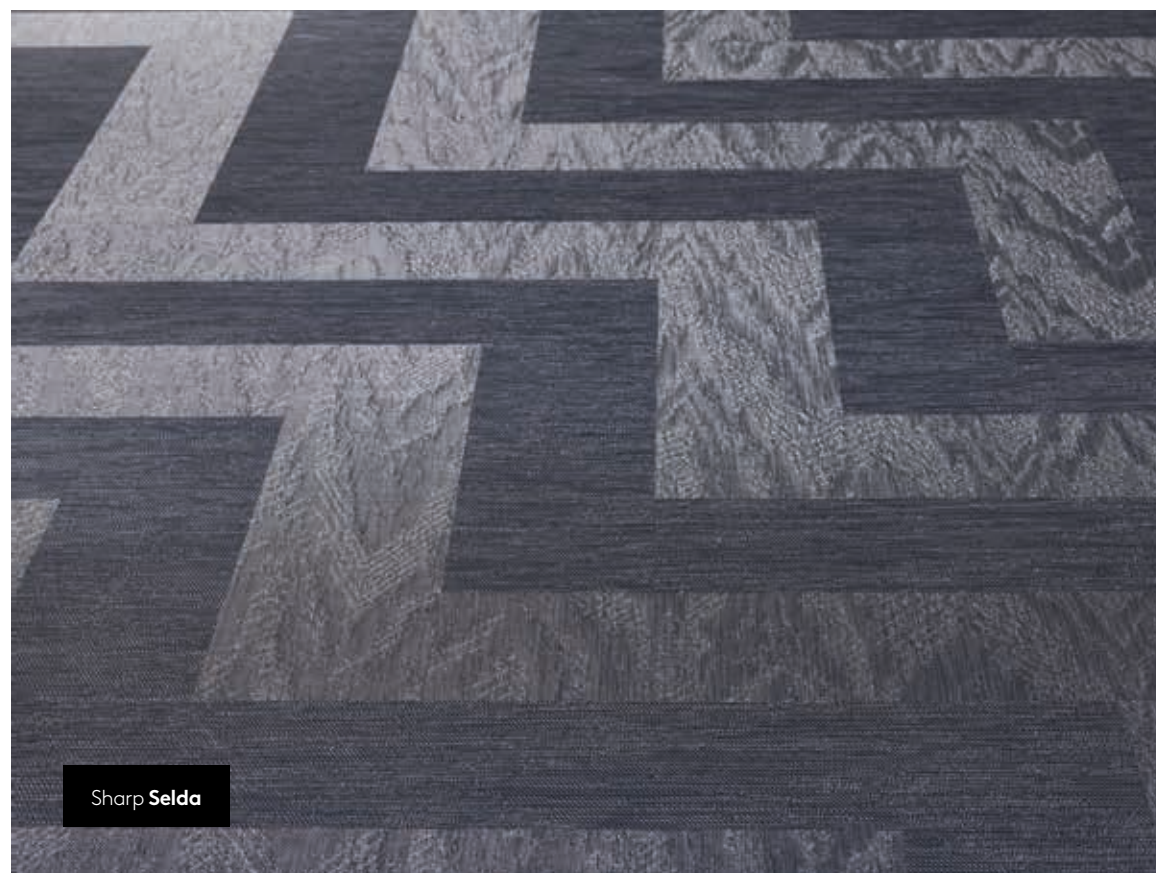


Plank

# Sharpen your soul.

You always pick the right direction.  
Where others get sidetracked left and right, you carve your own way. The arrows in the wood tell you exactly where you want to go. Your wit is sharp, your aim is true, your goal is clear.

**Sharp. Follow your arrow.**



Sharp Selda



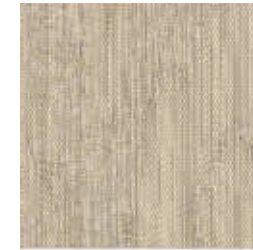
Sharp Claire





## Meet the sharp side of our family.

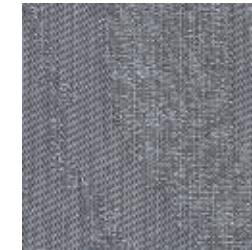
---



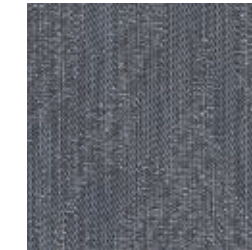
Claire



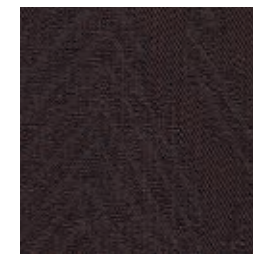
Pearl



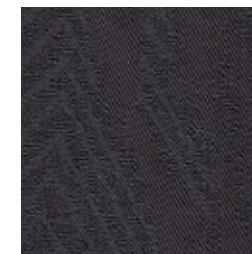
Blanca



Selda

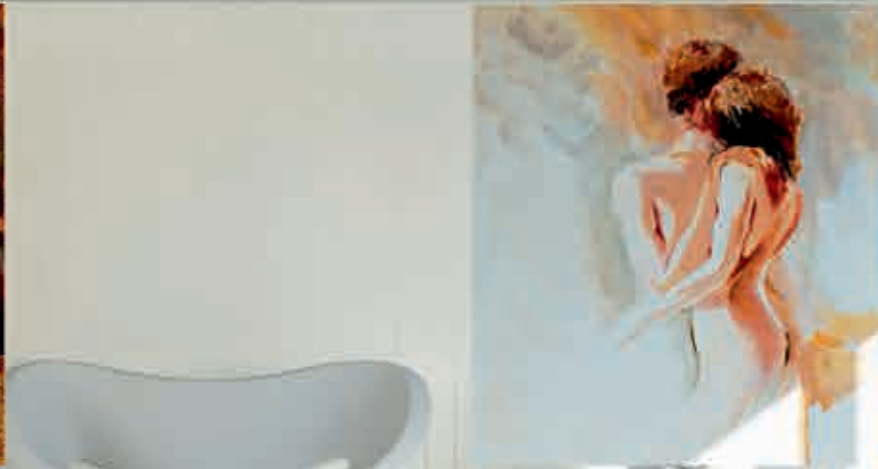


Bruno



Mauro





hello

# my name is Pearl

You want to know my colour, the nature of my light? Then throw some fragile pearls down onto these rocks. Now I'm broken. And I'm white.





Fair Coralie



tiles



rolls

## Fair play.

The shortest way between two points is a straight line. No wriggling about. No bending over backwards. Your design is yours, by design. Honest, simple, clear. A subtle grid that brings order to chaos. Wish everything were so well-delineated.

**Fair. I'm straight with a twist.**



Fair Hazel



hello

**my  
name is  
Aurore**

When you pull back the curtains, my rays of glory  
flood your room. Gold, pure white and crystal light.





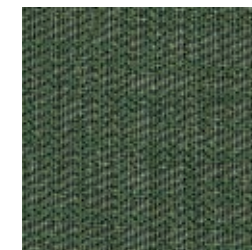
## Meet the fair side of our family.



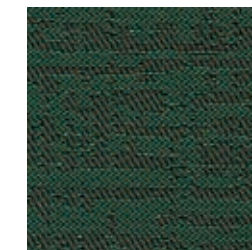
Myrthe



Chloé



Hazel



Esmée



Inez



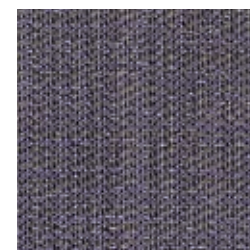
Sienna



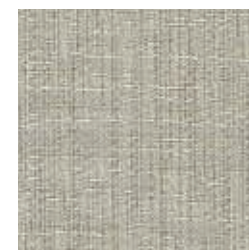
Coralie



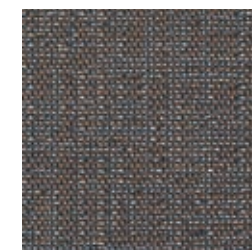
Camille



Fleur



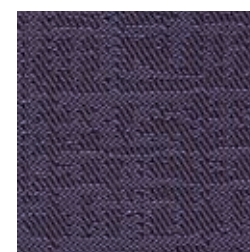
Aurore



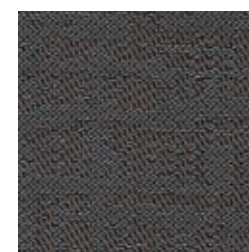
Raven



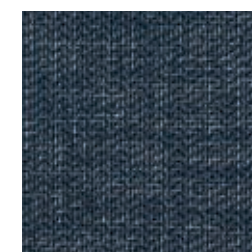
Suri



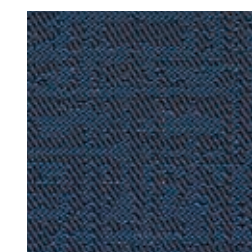
Viola



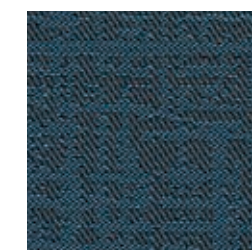
Leila



Océane



Henri



Albert



---

hello

---

# my name is Raven

Like a black raven, I swoop in through your open window. Sunlight sparkling on my inky feathers.



hello

# my name is Camille

Do you want to know who I am? Then pick me a bunch of wild flowers. Chamomile. Soothing, with a warm yellow heart.



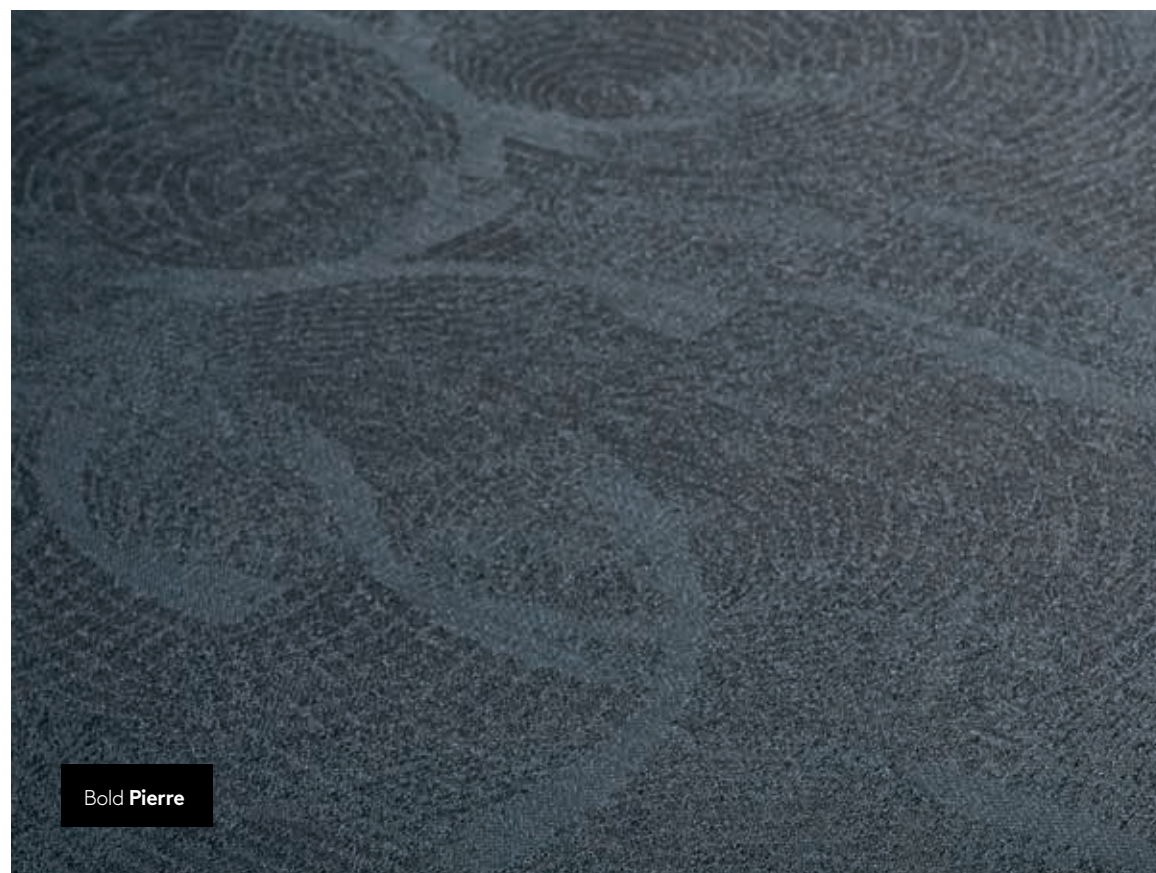


tiles

# Bold and beautiful.

Your life is not a straight line. You dance through your days. Round and round and round. Etched out on the floor, you see the dynamic rhythm of your life. You wind up where you started, in polished concrete circles.

**Bold. The circles of life.**



Bold Pierre



Bold Pierre

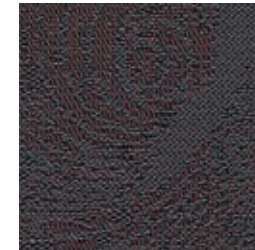




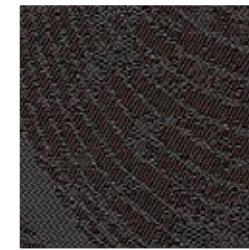
Bold Stan

Meet the bold  
side of our family.

---



Stan

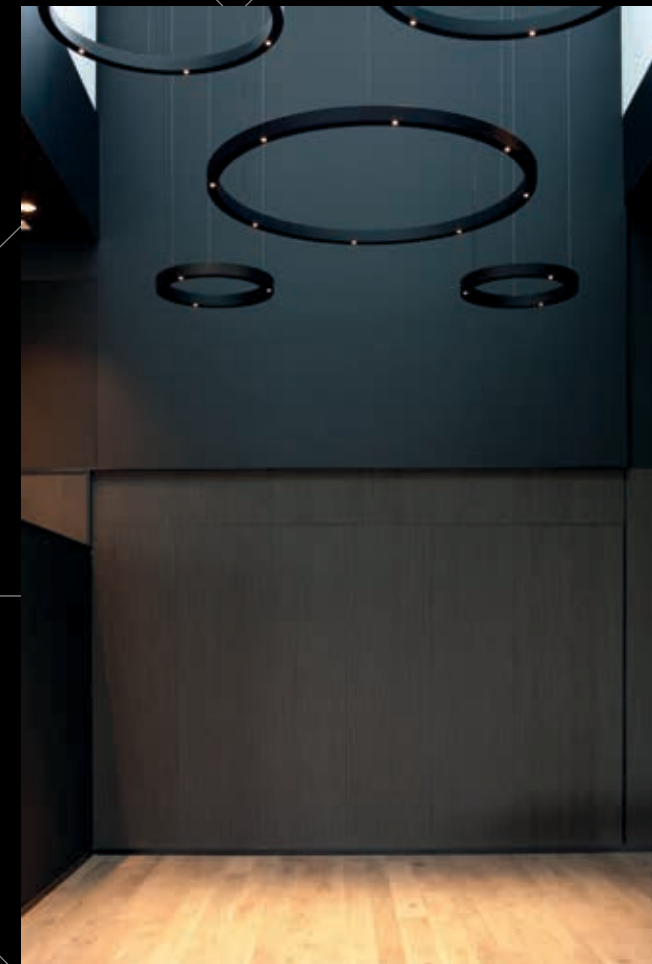


Pierre



ntgrate  
thinks  
ahead.

Print Acoustics/ntgrate® - Soundscapes by Zumi



Acoustic wall covering Print Acoustics/ntgrate®







Fair Henri

# Innovation has never sounded so silent.

— *a delight to the eye and the ear*

Just have a listen. Can you hear the silence of 'whisper' technology? Whisper is an **innovative backing**, made up of a 2.5 mm foam layer combined with a 'Topgrate®' top layer. The combination of both materials results in an improvement of impact noise to 20 dB ( $\Delta L_w$ ) in accordance with the ISO 140-8 standard.

In addition, Whisper also complies with the highest standards in terms of **fire retardancy** (EN 13501-1: Bfl,s1-d0).





Strong **Andreas**

# The click between us.

— *klic, the ideal plank floor*

Considering a renovation project? Looking to add character to a rented property? Choose ntgrate® klic planks. Extremely durable, ultra-thin. Barely 5.5 mm thick, this system constitutes the ideal plank floor with the looks of modern carpet.

Even better: you don't need a separate noise reducing underlay. This will gain you some extra space and save you some time, as well. Especially considering each plank measures **123.5 by 30.5cm**.

**Also suited for use in wet areas!**





# Inside out.

— *outdoor living*  
— *with ntgrate® carpet*

With a design floor of woven vinyl, you add a touch of class to your interior project. These carpets are available in **various colours and edgings**. So they adapt perfectly to your interior. Would you like to extend that same look to your exterior? You can.

Ntgrate® carpet is ideally suited to take your interior experience into the open air. Its **high-tech composition** makes cleaning your outdoor floor very easy.







Wall covering / Fair Mika

# Flooring, flooring on the wall.

— *floor your wall*

**Acoustic wall covering.** Just imagine: you're sitting in a hotel lounge. Suddenly, the room tilts. The floor becomes the wall. Is this a dream? No. Ntgrate® is making it real. The acoustic wall panels let you create a unique 360° experience. Feel, look and listen. **Only 1 cm thick, the panels are perfectly sound-absorbent, scratch-proof, impact-resistant and washable.** Better still: there are no seams or micro-perforations. All that meets the eye is the smooth final finish. Product in collaboration with Print Acoustics.

**Wallpaper.** Do you know what makes the sea seem so endless? On the horizon, the water subtly merges into the sky. Using ntgrate® wallpapers, you can achieve the same effect in your interior. **Let your floor design merge into your wall.** On top of being impact-resistant, this innovative wallpaper is washable.









Versatile - Star / Fair Inez / Fair Camille

# ntgrate for you.

— *at your service*

When you buy ntgrate® woven vinyl, you are assured of a quality product. Continuous monitoring during all phases of production ensures that you, as a customer, enjoy numerous guarantees: from perfect colour uniformity to years of wear resistance. A floor like that requires nothing less than perfect service.

- Do you have questions about installation or do you require **technical advice**? Your go-to contact is always there for you. Your 'ntgrater' monitors your project and has the requisite know-how to do so. If you need help, it will come swiftly and expertly.
- In two minds about collections or colours? Want to delve into the technical details? We will gladly provide you with the appropriate samples, specification texts and technical sheets. Everything you need to make the best choice and get your **dream result**.
- Anyone can sell a floor. ntgrate® also focuses on the rest of the process: a smooth and **personal after-sales service**.
- Looking for someone to install the floor for you? Get in touch with one of our **certified partners**. Perfect installation guaranteed!
- Our worldwide presence and ever growing customer base are proof of the service that ntgrate® provides.







# ntgrate is green.

— *and peachy orange, ruby red, soft gray*


- What do colours reveal about you? By choosing a neutral beige or a bold red, you are telling the world something about yourself. But whatever colour or collection you choose, you always go green with ntgrate®. The colour of Mother Nature.
- ntgrate® monitors all **innovative processes**: link by link. During every step, we strive for '**zero waste**'. That way, you only pay for what you get and we save the environment.
- **A state-of-the-art filtering system** turns all flue gases into clean air.
- We keep **trucking to a minimum** thanks to vertically integrated production, local collaborations and regional employment.
- Whenever we can, we negotiate electricity and gas deals from **green energy sources**.
- All of our raw materials are **reach compliant** and harmless. We recommend using **environmentally friendly cleaning products** for the cleaning of ntgrate®.
- We obtain our raw materials (glass) from natural products, and our chemicals are **phthalate-free**.
- Our stringent quality demands result in floors that have a **long lifecycle**. Going ntgrate® means you have a sustainable design product that will last you an eternity.
- Our products have all required green and VOC emission **certificates** (cfr. Page 63)



## technical specifications

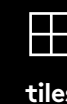
		 tiles Pure	 rolls Pure	 tiles - rolls Whisper	 klic Hydro sound
	<b>wear layer</b>	≥80/20 PVC/Glass			
	<b>finish</b>	PVC glass fibre reinforced	PVC glass fibre reinforced	PVC glass fibre reinforced	Hard PVC
 ISO 1765	<b>thickness</b>	3,2 mm	2,3 mm	3,5 mm	5,5 mm
 ISO 8543	<b>weight</b>	4.500 g/m <sup>2</sup>	2.500 g/m <sup>2</sup>	2.200 g/m <sup>2</sup>	5.600 g/m <sup>2</sup>
 EN 15114	<b>level of use</b>	class 33	class 33	class 32	class 33
 EN 986/ ISO 2551	<b>dimensional stability</b>	< 0,1 %	/	< 0,1 %	/
 EN 985	<b>suitability for castor chair</b>	continuous use	continuous use	continuous use	continuous use
 ISO 6356	<b>static loading</b>	< 2KV	< 2KV	< 2KV	< 2KV
 EN13893	<b>slip resistance</b>	> 0,3	> 0,3	> 0,3	> 0,3
 ISO 10140	<b>impact sound ΔLw</b>	14 dB	12 dB	20 dB	22 dB
 EPLF 021029-2	<b>drum sound absorption</b>	40%	39%	39%	40%
 ISO 11654	<b>sound absorption αS</b>	200 Hz: 0,01 2000Hz: 0,09	200 Hz: 0,01 2000Hz: 0,09	200 Hz: 0,01 2000Hz: 0,09	200 Hz: 0,01 2000Hz: 0,09
 EN 105-B02	<b>light fastness</b>	≥ 7	≥ 7	≥ 7	≥ 7
 EN 13501	<b>reaction to fire</b>	B <sub>i</sub> -s1	B <sub>i</sub> -s1	B <sub>i</sub> -s1	B <sub>i</sub> -s1
 EN 984	<b>dimensions</b>	500 x 500 mm	/	500 x 500 mm	1235 x 305 mm
 ISO 24341	<b>width</b>	/	200 – 202 cm	200 – 202 cm	/
 ISO 10965	<b>length</b>	/	on request	on request	/
 ISO 24334	<b>locking strength</b>	/	/	/	fulfils the requirements for class 33
 EN 1814	<b>resistance to fraying</b>	very good	very good	very good	very good
 EN 423	<b>staining resistance</b>	very good	very good	very good	very good
 EN 15114	<b>suitability for humid conditions</b>	/	suitable	suitable with whisper rolls	suitable
 EN 14.041	<b>Dop nr.</b>	0493-CPR-0110	0493-CPR-0111	0493-CPR-0164 0493-CPR-0163	0493-CPR-0115

## green and VOC emission certificates

Regulation or protocol	Conclusion	Version of regulation or protocol
French VOC Regulation		Regulation of March and April 2011 (DEVL1101903D and DEVL1104875A)
French CMR components	Pass	Regulation of March and April 2011 (DEVL1101903D and DEVL1104875A)
AgBB	Pass	AgBB of February 2015. DIBt of October 2010
Belgian Regulation	Pass	Royal decree of May 2015 (C-2014/24239)
EMICODE	EC 1 PLUS	November 2015
Indoor Air Comfort®	Pass	Indoor Air Comfort 5.3a of March 2015
Indoor Air Comfort GOLD®	Pass	Indoor Air Comfort GOLD 5.3a of March 2015
EN 717-1 <sup>§</sup>	E1	2004
Blue Angel (RAL UZ 120)	Pass	Resilient Floor Covering, February 2011
BREEAM International	Compliant	GN22: BREEAM Recognised Schemes for VOC Emissions from Building Products
LEED v4 (outside U.S.)	Compliant	LEED v4 for Building Design and Construction (April, 2015)



ntgrate® flooring is available in:



Ntgrate® meets all of the product required CE-standards.

This information is for informational purposes only and does not constitute any obligation on our part. Ntgrate® reserves the right to change materials, dimensions and characteristics without prior notice. Ntgrate® cannot be held responsible for any differences between the pictures or descriptions and the actual product. Please note that actual colours may vary from what is shown in this catalog. All photos are the sole property of Ntgrate®.



# Meet the ntgrate® family.

Who lives and works here? Who lives and laughs here? The answers to those questions give character to your interior project. You don't design a space. You shape your life. Sometimes wild and challenging. Sometimes refined and subtle.

## **Personal design. Maintenance friendly.**

Sssht. Just have a listen. Can you hear the silence of 'whisper' technology? This flooring is a delight to the eye and the ear.

## **Innovation has never sounded so silent.**

**Discover the new generation of vinyl woven floors.** Meet fair Fleur, sharp Claire and co. The latest generation of floor covering that adapts itself to your personality: from gently sharp to dynamically bold.

## **Creatively versatile. Extremely durable.**

The jacquard technique reinvented! Each thread follows its own path, giving you the most unique designs.

## **Play. Dare. Live.**

# ntgrate®

Rijksweg 125, 8531 Bavikhove  
T +32 (0)56 719 543 / F +32 (0)56 753 767  
info@ntgrate.eu / [www.ntgrate.eu](http://www.ntgrate.eu)