

ntgrate[®]

premium woven vinyl flooring

Let's ntgrate.

ntgrate® collection
Meet our family.

06

History.
Know-how and craftsmanship since 1958.

08

Quality is what you get.
Get to know the DNA of ntgrate®.

010

Whisper.
Innovation has never sounded
so silent.

012

Klic.
The extremely durable plank floor.

014

Ecology.
ntgrate® is green.

016

From inspiration to creation.
Where makers meet creators.

018

We ntgrate®.
Office. Hospitality. Retail. Home.

020

What kind of person are you?
Noble 28. Fair 34. Gentle 42.
Brave 46. Wild 52. Strong 58.

026

Carpet.
Inside out. Outdoor living.

064

Acoustic wall covering-Wall paper
Floor your wall.

066

At your service.

068

Technical specifications.

070



hello

my name is Anastacia

Strict and imposing. When I fall, I rise again,
proudly. Who says black is not a colour?
If you want to discover my lighter side,
you'll have to work through
my warm darkness first.

fair.



strong.



gentle.

noble.



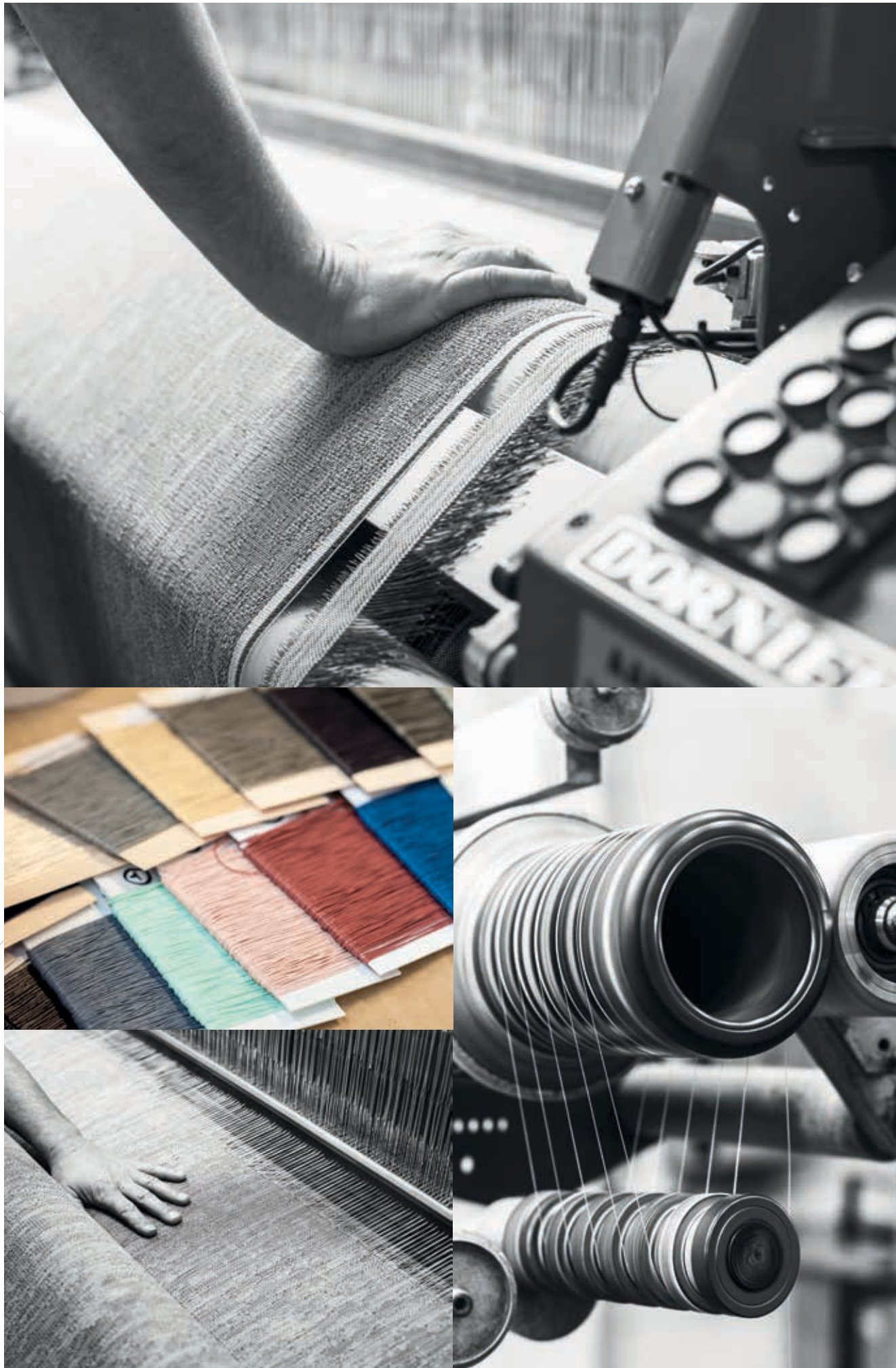
brave.

wild.

Meet our family.

Olivia. Marie. Antoinette. Lily. Otto. Jack. Neo. Each line was given a resounding name. From vintage chic to tight and tough. If you follow the unique life paths of the woven threads, you will meet a different soul every time. And that's what makes the ntgrate® family so special.

Dare to combine. Otto with Marie. Falco with Max. Neo with Antoinette. They will make you see your interior project differently every time. The only creative limit is where you draw the line. Aim for recklessly wild or royally sober. **You choose. You live. You create.**



The future is innovating your past.

— *know-how and craftsmanship since 1958*

Do you choose the personal character of ntgrate®? Then you choose yesterday's craftsmanship and the dynamics of tomorrow. This new generation of flooring combines the art of weaving with today's most innovative techniques. Craftsmanship meets high-tech.

The past. The ntgrate® family originates from Copaco Screenweavers, who were founded in 1958 and established themselves as the European leaders in fiberglass fabrics. Just like their ancestors, the second generation is also fully committed to innovation. In the world of interior design and high performance flooring, ntgrate® woven vinyl is state-of-the-art.

The future. Combining over 60 years of know-how with clever vertical integration, every floor tile is a high-quality masterpiece. The family expands, from noble Melvin to wild Luna. Every line is given its own personality. Find the style that fits you and shape your life. Today and tomorrow.

Belgian quality. World class.



Noble Olivia

Quality is what you get.

— *force is what you feel*

Have a look at your own family. Behind every name lies a different character. It's no different here. George isn't Milo. And still. You'll find that every line carries the same DNA at its core: eye-catching design, indestructible, maintenance-friendly, endless possibilities.

Eye-catching design. Look at your floor in the light of morning and again at dusk. Notice the difference? Like a painter works his canvas using light, so does your floor's design. The incidence of light and laying direction determine the atmosphere of your interior project.

Indestructible. Don't let the design's elegant looks fool you. The ntgrate® top layer and fiberglass core are extremely tough and sturdy. The high-tech Topgrate® weave sets a new standard in floor quality: it's dimensionally stable, extremely wear-resistant and has great colour uniformity. Approved for intensive, high commercial use. Feel like organizing a marathon in your new interior? Get set. Go!

Maintenance-friendly. You're not one to sit still. You're the hop-skip-jump-oops!-let's-get-this-party-started type. Your floor pulses to your rhythm. Cleaning's clearly not your thing, living is. ntgrate® repels dirt easily, always leaving it looking fresh and new. Day after day. Night after night.

Endless possibilities. Go wild and mix it all up in your hotel lobby. Keep it sober in your office space. Unique designs and trendy characters let you combine to your heart's content: from rough and rugged to wonderfully subdued. Who would you like to be?



Noble Louise

Innovation has never sounded so silent.

— *a delight to the eye and the ear*

Just have a listen. Can you hear the silence of 'whisper' technology? Whisper is an **innovative backing**, made up of a 2.5 mm foam layer combined with a 'Topgrate®' top layer. The combination of both materials results in an improvement of impact noise to 20 dB (ΔL_w) in accordance with the ISO 140-8 standard.

In addition, Whisper also complies with the highest standards in terms of **fire retardancy** (EN 13501-1: Bfl,s1-d0).



Strong **Andreas**

The click between us.

— *klic, the ideal plank floor*

Considering a renovation project? Looking to add character to a rented property? Choose ntgrate® klic planks. Extremely durable, ultra-thin. Barely 5.5 mm thick, this system constitutes the ideal plank floor with the looks of modern carpet.

Even better: you don't need a separate noise reducing underlay. This will gain you some extra space and save you some time, as well. Especially considering each plank measures **120 by 30.5cm**.

Also suited for use in wet areas!



ntgrate is green.

— *and peachy orange, ruby red, soft gray*

- What do colours reveal about you? By choosing a neutral beige or a bold red, you are telling the world something about yourself. But whatever colour or collection you choose, you always go green with ntgrate®. The colour of Mother Nature.
- ntgrate® monitors all **innovative processes**: link by link. During every step, we strive for '**zero waste**'. That way, you only pay for what you get and we save the environment.
- **A state-of-the-art filtering system** turns all flue gases into clean air.
- We keep **trucking to a minimum** thanks to vertically integrated production, local collaborations and regional employment.
- Whenever we can, we negotiate electricity and gas deals from **green energy sources**.
- All of our raw materials are **reach compliant** and harmless. We recommend using **environmentally friendly cleaning products** for the cleaning of ntgrate®.
- We obtain our raw materials (glass) from natural products, and our chemicals are **phthalate-free**.
- Our stringent quality demands result in floors that have a **long lifecycle**. Going ntgrate® means you have a sustainable design product that will last you an eternity.
- Our products have all required green and VOC emission **certificates** (cfr. Page 71)



Fair Manon

From inspiration to creation.

— *where makers meet creators*

You push the boundaries with ntgrate®. The foundation is our limitless search for **inspiring trends**. Looking for an innovative floor? Then think out of the box, and cross some lines.

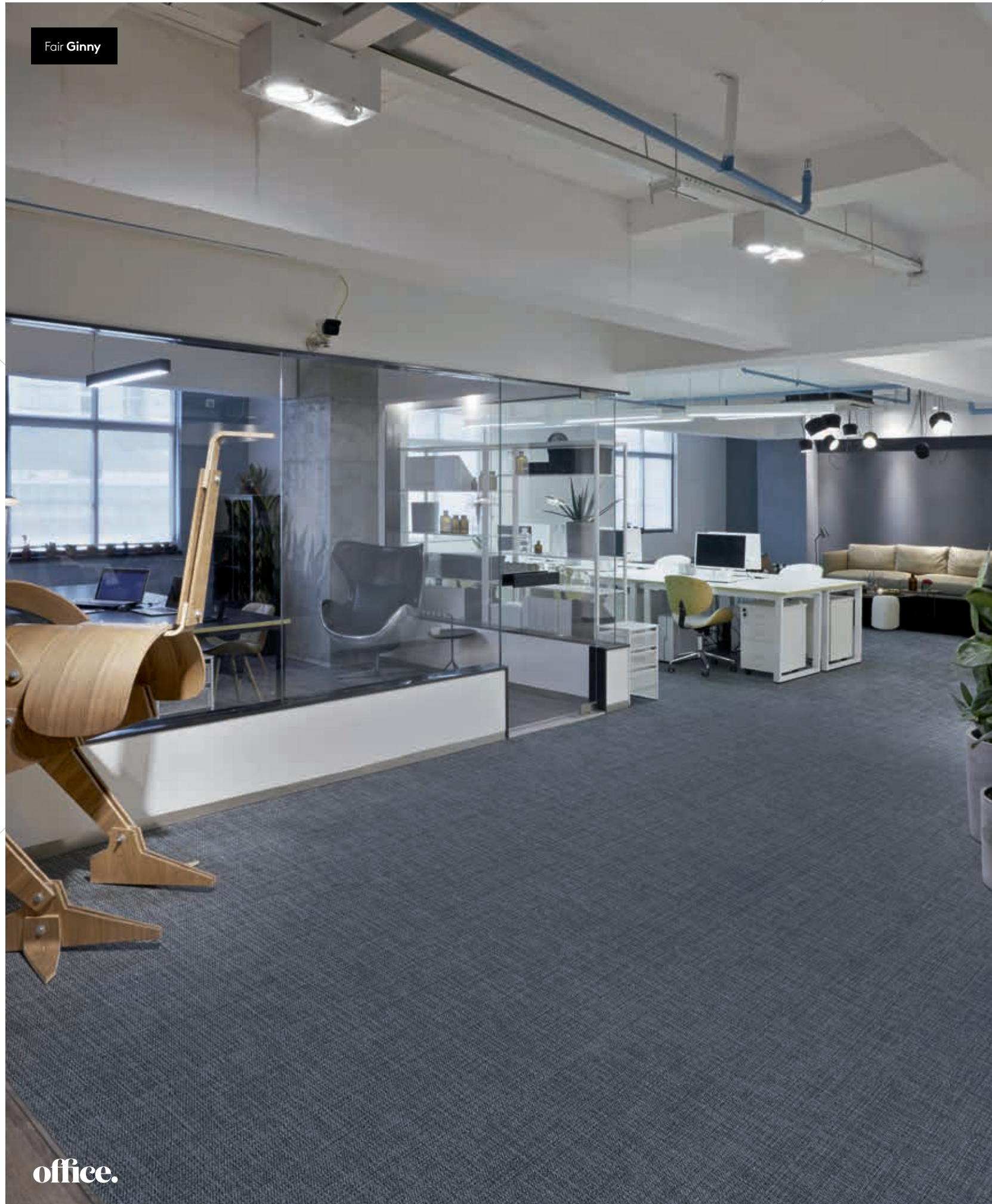
Our designers and technicians hit the town with trend watchers, fashion designers and colour experts. Well, they hit the world, actually, scooping up ideas everywhere: from retro photography in Berlin to modern art in New York. The result? An extensive collection of floorings sporting **distinctive shapes, colours and characters**.

Shapes. Ntgrate® is available as tiles (50x50cm), rolls (2m) and 'klic' planks. If you are looking for **the flooring that suits you best**, you'll find a solution here. Looking for additional impact? Why not go wild with some exciting patterns?

Colours. Misty grey. Emerald green. Deep red. Anthracite. Slick and tight. Our designers travelled abroad, shapeshifted into colour catchers. An even beige or a wild patchwork? Anything is possible.

Characters. Each line has its own unique face. Internal and external craftsmen have designed patterns based on dozens of names and personalities. Did your name make the list? Surely, that's not a coincidence.

Fair Ginny



office.

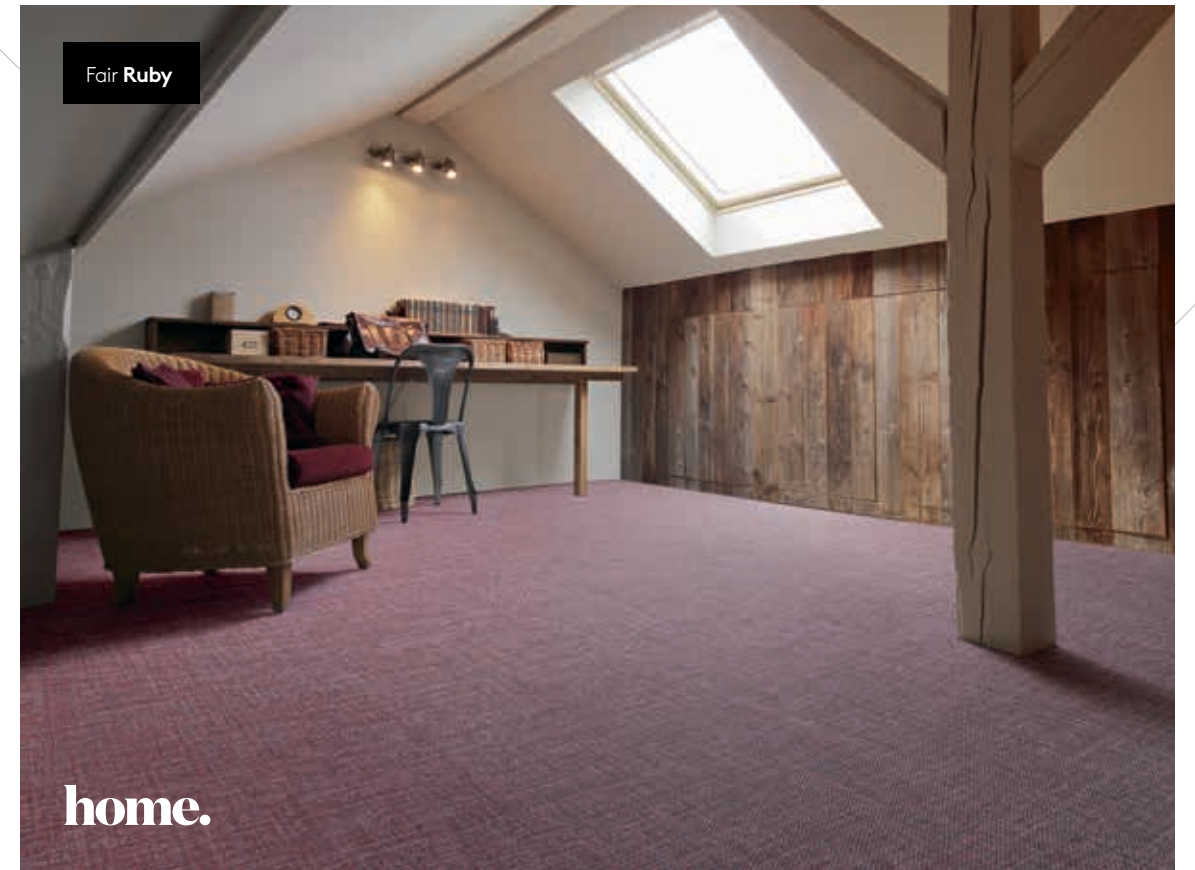
we ntgrate.

— *the right person, in the right place*

Who are the people that like to drop by your place? Pass through your door? Walk on your floor? Truth be told, we are used to a motley crew at ntgrate®. Creative souls - interior designers, architects, artists - as well as the more practically inclined. And we have **flooring to match each and every personality**. From vintage chic to boisterously hip. There's one thing they all have in common, though: they all set the bar pretty, pretty high. Floors should be sturdy and resilient. In an **office**, people bubble and bounce around all the time. In **hotels and retail**: hustle and bustle! And at **home**? Ah, those twin domains of peace and pandemonium!

Ntgrate® has been certified for **class 33**. Having a rough day? May the floors be with you. Strictly Belgian, as well. Surrealistically surfing between bonkers and brilliant. Make your play with tiles, click or strips. Explore your own limits. Or flirt with new frontiers: with Jade, from the mysterious East, or Edward, the quintessential Brit. We dare you.

Fair Ruby



home.

Mode-accessoires



hello

my name is Matisse

Quirky and creative. Are you looking for that warm, relaxing, cozy feeling? Then I'm your man. The warm shades of grey in my hair belie my age. I am forever young.

retail.



hello

**my
name is
Max**

I'm the man of the house. Solid and strong.
Would you like to discover my feminine side?
Then you will have dig deep into my dark soul.

hospitality.

**What kind
of person
are you?**



tiles



rolls

Noblesse oblige.

You have class. You stroll through life with an air of nobility and royalty. Always on the lookout for style and refinement. Naturally elegant, this stately and distinguished design caresses your senses.

Noble. You call me elegance. I prefer noblesse

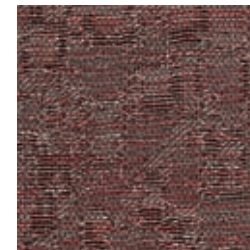


Noble Charlotte



Meet the noble side of our family.

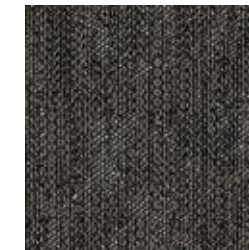
■ ntgrate® essentials



Marie



Morena ■



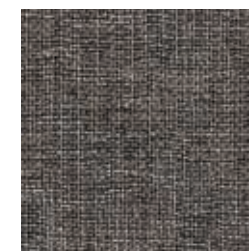
George



Robin



Lily



Jutta ■



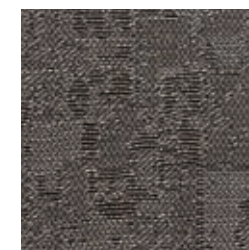
Edward



Balthasar ■



Charlotte



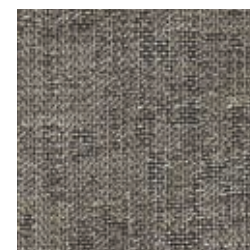
Santa



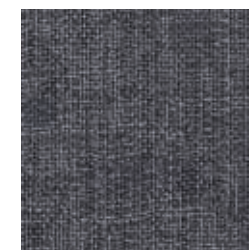
Melvin ■



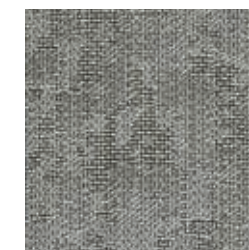
Felix ■



Olivia



Levi



Madeleine ■



Jacqueline ■



Louise



Agatha



Theodore ■

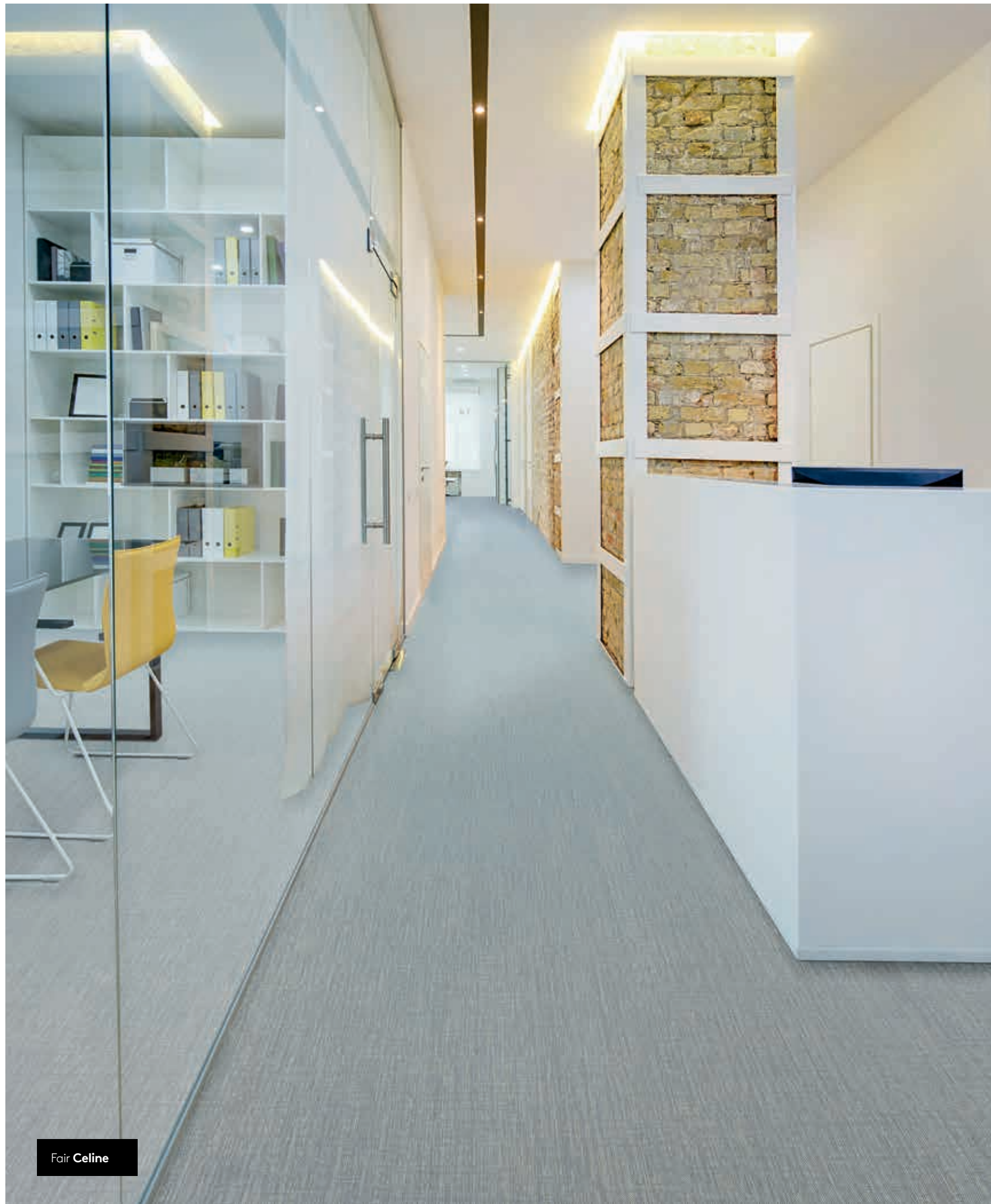


Mulan ■

hello

my name is Morena

Dark, raw soul. Want to see my lighter side?
Then watch the white yarn mysteriously running
through my veins.



Fair Celine



tiles



rolls

Fair play.

The shortest way between two points is a straight line. No wriggling about. No bending over backwards. Your design is yours, by design. Honest, simple, clear. A subtle grid that brings order to chaos. Wish everything were so well-delineated.

Fair. I'm straight with a twist.





ROJO ROJO

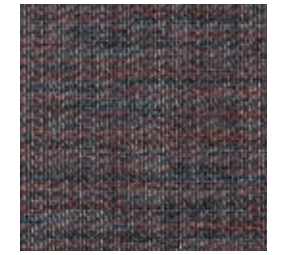
hello

my name is Victor

The name says it all, really. I carry a gold medal wherever I go. The more light there is, the more my natural beige sheen will win you over. Victory!



Meet the fair side of our family.

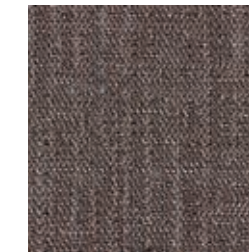


Neo ■

■ ntgrate® essentials



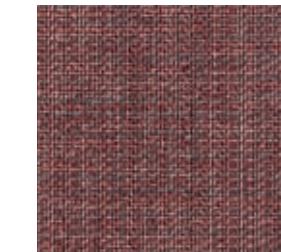
Miguel ■



Mika ■



Falco ■



Ruby ■



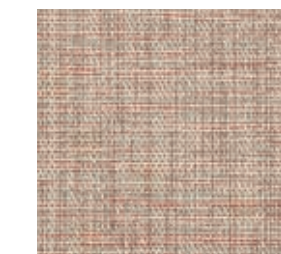
Matisse ■



Nathan ■



Hugo ■



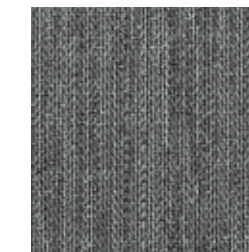
Naomi ■



Marco ■



Antoinette ■



Iris ■



Amber ■



Victor ■



Celine ■



Ginny ■



Pia ■



Noah ■



Finn ■



Astrid ■



Manon ■



hello

my name is Naomi

Do you want to know who I am? I am mainly
there for you. Sweet. Creative. Caring.
The beige reveals my gentle side.
The red betrays my passionate nature.



Gentle Oliver



tiles

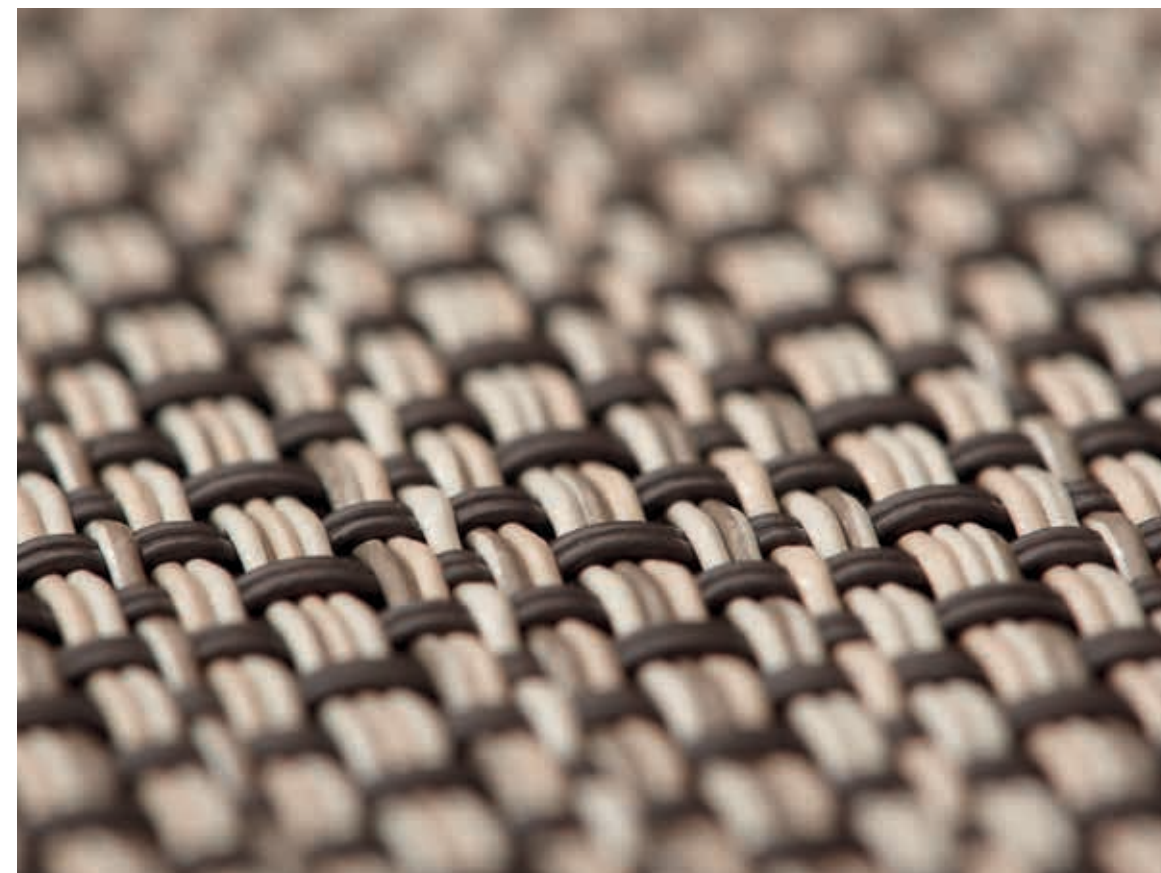


rolls

Gentle. Be honest. Be true. Just be.

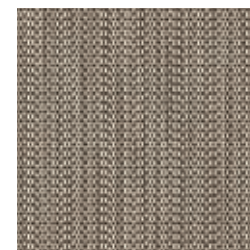
Simplicity and tranquility. That is you all over. The hustle and bustle of life, you know it all too well. Work. Family. Friends. And when you reach home port after the day's rough sailing, you welcome a smooth sea more than anything. An open view, as far as you can see.

Gentle. For gentlemen and ladies.

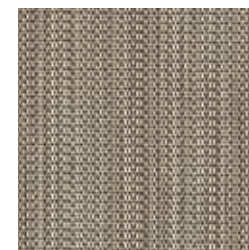




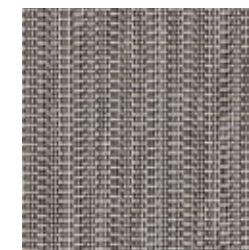
Meet the gentle side of our family.



Ellis



Oliver



Mila



Anna



Grace

Gentle Ellis



tiles



rolls

Dare to be Brave.

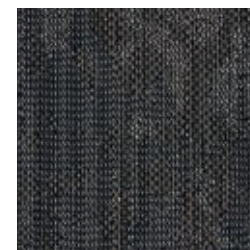
Life favours the daring, the dreamers and the doers. You shatter all expectations: fiercely and ferociously. Just feel me. Tree bark, rather than mirror glass. Leave the shiny and smooth stuff to the others. You are raw and unpolished. You are the real deal.

Brave. I dare you.

Brave Sam



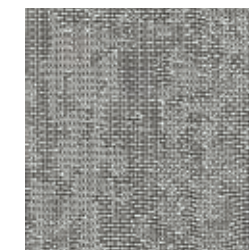
Meet the brave side of our family.



Otto



Jack



Sam



Charles



Luce

hello

my name is Luce

Do you see that woman over there? That's me.
Luce. Deep down inside, I still feel like a little girl.
My favourite colour: soft beige.



Wild Jade



tiles

Go Wild.

Veer off the beaten path. Take the less-travelled route. Boldly go where no one has gone before. Into the wild. You're not anyone. A quiet still-life? Not a chance. You prefer an impetuous patchwork.

Wild. Will you tame my wildness?





Meet the wild side of our family.



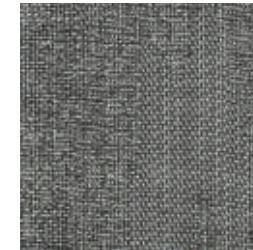
Anastacia



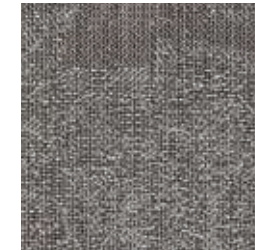
Milo



Leon



Jade



Luna





hello

my name is Luna

Born on a full moon, a speck of light in the dark. Let me wake over your dreams. Silvery grey in a dark night.



Klic

Strong. My strength, your power.

As life rushes by you sometimes. You live. You give. You go up. And down. At times, all you want is to feel grounded again. Find footing on a solid foundation, coming home. A place to be yourself. Stylish. Elegant. With an inside that is indestructible.

Strong. Feel stronger.



058

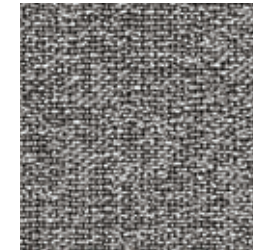


Strong Dawn

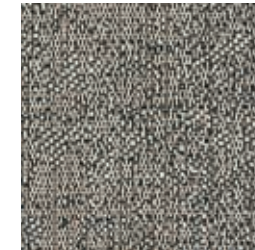
059



Meet the strong side of our family.



Luca



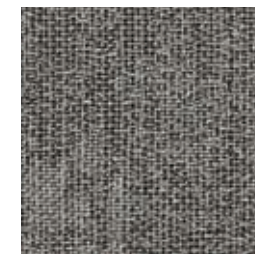
Andreas



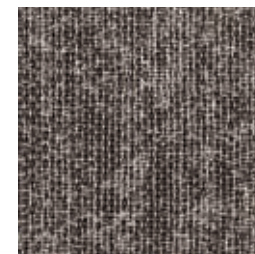
Max



Lea



Graeme

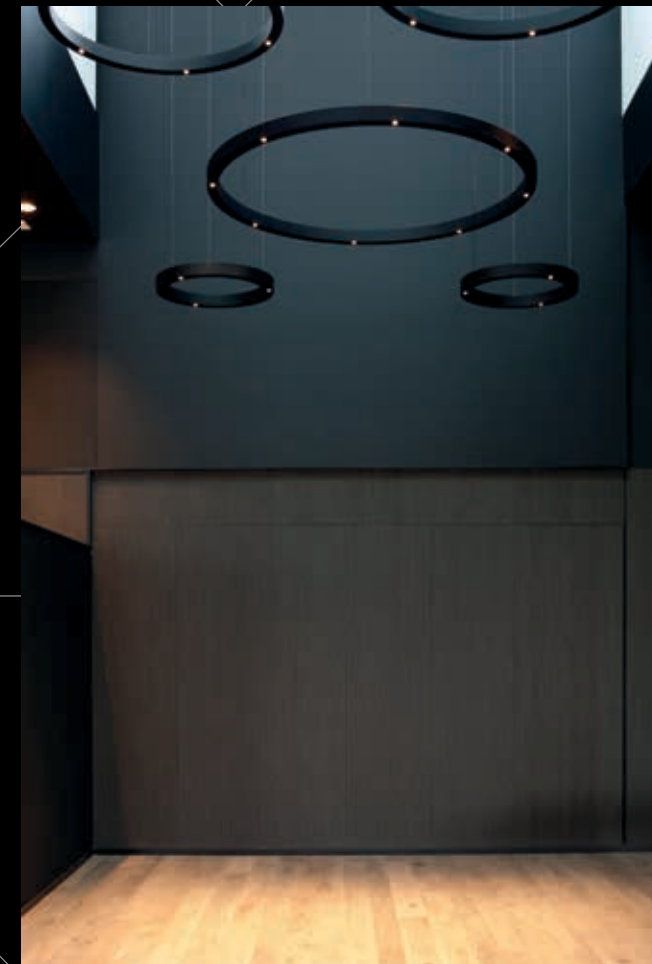


Dawn

Strong **Graeme**

ntgrate
thinks
ahead.

Print Acoustics/ntgrate® - Soundscapes by Zumi



Acoustic wall covering Print Acoustics/ntgrate®





Inside out.

— *outdoor living*
— *with ntgrate® carpet*

With a design floor of woven vinyl, you add a touch of class to your interior project. These carpets are available in **various colours and edgings**. So they adapt perfectly to your interior. Would you like to extend that same look to your exterior? You can.

Ntgrate® carpet is ideally suited to take your interior experience into the open air. Its **high-tech composition** makes cleaning your outdoor floor very easy.





Flooring, flooring on the wall.

— *floor your wall*

Acoustic wall covering. Just imagine: you're sitting in a hotel lounge. Suddenly, the room tilts. The floor becomes the wall. Is this a dream? No. Ntgrate® is making it real. The acoustic wall panels let you create a unique 360° experience. Feel, look and listen. **Only 1 cm thick, the panels are perfectly sound-absorbent, scratch-proof, impact-resistant and washable.** Better still: there are no seams or micro-perforations. All that meets the eye is the smooth final finish. Product in collaboration with Print Acoustics.

Wallpaper. Do you know what makes the sea seem so endless? On the horizon, the water subtly merges into the sky. Using ntgrate® wallpapers, you can achieve the same effect in your interior. **Let your floor design merge into your wall.** On top of being impact-resistant, this innovative wallpaper is washable.



Fair Amber



ntgrate for you.

— *at your service*


When you buy ntgrate® woven vinyl, you are assured of a quality product. Continuous monitoring during all phases of production ensures that you, as a customer, enjoy numerous guarantees: from perfect colour uniformity to years of wear resistance. A floor like that requires nothing less than perfect service.

- Do you have questions about installation or do you require **technical advice**? Your go-to contact is always there for you. Your 'ntgrater' monitors your project and has the requisite know-how to do so. If you need help, it will come swiftly and expertly.
- In two minds about collections or colours? Want to delve into the technical details? We will gladly provide you with the appropriate samples, specification texts and technical sheets. Everything you need to make the best choice and get your **dream result**.
- Anyone can sell a floor. ntgrate® also focuses on the rest of the process: a smooth and **personal after-sales service**.
- Looking for someone to install the floor for you? Get in touch with one of our **certified partners**. Perfect installation guaranteed!
- Our worldwide presence and ever growing customer base are proof of the service that ntgrate® provides.

technical specifications

		 tiles Pure	 rolls Pure	 tiles - rolls Whisper	 klic Hydro sound
	wear layer	≥80/20 PVC/Glass			
	finish	PVC glass fibre reinforced	PVC glass fibre reinforced	PVC glass fibre reinforced	Hard PVC
 ISO 1765	thickness	3,2 mm	2,3 mm	3,5 mm	5,5 mm
 ISO 8543	weight	4.500 g/m ²	2.500 g/m ²	2.200 g/m ²	5.600 g/m ²
 EN 15114	level of use	class 33	class 33	class 32	class 33
 EN 986/ ISO 2551	dimensional stability	< 0,1 %	/	< 0,1 %	/
 EN 985	suitability for castor chair	continuous use	continuous use	continuous use	continuous use
 ISO 6356	static loading	< 2KV	< 2KV	< 2KV	< 2KV
 EN13893	slip resistance	> 0,3	> 0,3	> 0,3	> 0,3
 ISO 10140	impact sound ΔLw	14 dB	12 dB	20 dB	22 dB
 EPLF 021029-2	drum sound absorption	40%	39%	39%	40%
 ISO 11654	sound absorption αS	200 Hz: 0,01 2000Hz: 0,09	200 Hz: 0,01 2000Hz: 0,09	200 Hz: 0,01 2000Hz: 0,09	200 Hz: 0,01 2000Hz: 0,09
 EN 105-B02	light fastness	≥ 7	≥ 7	≥ 7	≥ 7
 EN 13501	reaction to fire	B _i -s1	B _i -s1	B _i -s1	B _i -s1
 EN 984	dimensions	500 x 500 mm	/	500 x 500 mm	1235 x 305 mm
 ISO 24341	width	/	200 – 202 cm	200 – 202 cm	/
 ISO 10965	length	/	on request	on request	/
 ISO 24334	locking strength	/	/	/	fulfils the requirements for class 33
 EN 1814	resistance to fraying	very good	very good	very good	very good
 EN 423	staining resistance	very good	very good	very good	very good
 EN 15114	suitability for humid conditions	/	suitable	suitable with whisper rolls	suitable
 EN 14.041	Dop nr.	0493-CPR-0110	0493-CPR-0111	being tested	0493-CPR-0115

green and VOC emission certificates

Regulation or protocol	Conclusion	Version of regulation or protocol
French VOC Regulation		Regulation of March and April 2011 (DEVL1101903D and DEVL1104875A)
French CMR components	Pass	Regulation of March and April 2011 (DEVL1101903D and DEVL1104875A)
AgBB	Pass	AgBB of February 2015. DIBt of October 2010
Belgian Regulation	Pass	Royal decree of May 2015 (C-2014/24239)
EMICODE	EC 1 PLUS	November 2015
Indoor Air Comfort®	Pass	Indoor Air Comfort 5.3a of March 2015
Indoor Air Comfort GOLD®	Pass	Indoor Air Comfort GOLD 5.3a of March 2015
EN 717-1 [§]	E1	2004
Blue Angel (RAL UZ 120)	Pass	Resilient Floor Covering, February 2011
BREEAM International	Compliant	GN22: BREEAM Recognised Schemes for VOC Emissions from Building Products
LEED v4 (outside U.S.)	Compliant	LEED v4 for Building Design and Construction (April, 2015)

BREEAM®



ntgrate® flooring is available in:



tiles



rolls



Klic

Ntgrate® meets all of the product required CE-standards.

This information is for informational purposes only and does not constitute any obligation on our part. Ntgrate® reserves the right to change materials, dimensions and characteristics without prior notice. Ntgrate® cannot be held responsible for any differences between the pictures or descriptions and the actual product. Please note that actual colours may vary from what is shown in this catalog. All photos are the sole property of Ntgrate®.

Meet the ntgrate® family.

Who lives and works here? Who lives and laughs here? The answers to those questions give character to your interior project. You don't design a space. You shape your life. Sometimes wild and challenging. Sometimes refined and subtle.

Personal design. Maintenance friendly.

Sssht. Just have a listen. Can you hear the silence of 'whisper' technology? This flooring is a delight to the eye and the ear.

Innovation has never sounded so silent.

Discover the new generation of vinyl woven floors.

Meet noble Melvin, wild Luna, gentle Ellis and co. The latest generation of floor covering that adapts itself to your personality: from gently elegant to dynamically brave.

Creatively versatile. Extremely durable.

The jacquard technique reinvented! Each thread follows its own path, giving you the most unique designs.

Play. Dare. Live.

ntgrate®

Rijksweg 125, BE- 8531 Bavikhove
T +32 (0)56 719 543 / F +32 (0)56 753 767
info@ntgrate.eu / www.ntgrate.eu